

NATIONAL
RETAIL
SOLUTIONS

Zebex Z-3192BT Plus Wireless Handheld Scanner

Panther Install Guide

This scanner is programmed to work with the **NRS PUMA**, **CHEETAH** and **PANTHER POS** systems.

Z-3192BT Plus Wireless Handheld Scanner package contains:



Scanner and
Cradle



Battery

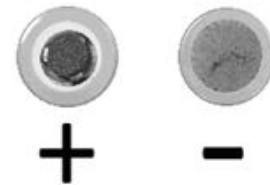


USB-C Charging
and communication
cable



5V USB power
adapter

First, install the scanner battery included in the box:



- Remove the screw securing the bottom cover of the device.
- Install the Battery: Orient the battery so that the positive terminal faces forward.
- Carefully place the battery into the designated compartment, ensuring a secure fit.
- After installation, replace and secure the bottom cover with the screw.
- Next, assemble the included power supply and USB C Cable.
- Now, lift up the rubber on the bottom end of the scanner to charge the unit in case the battery is not charged. Connect the USB-C connector directly to the scanner.

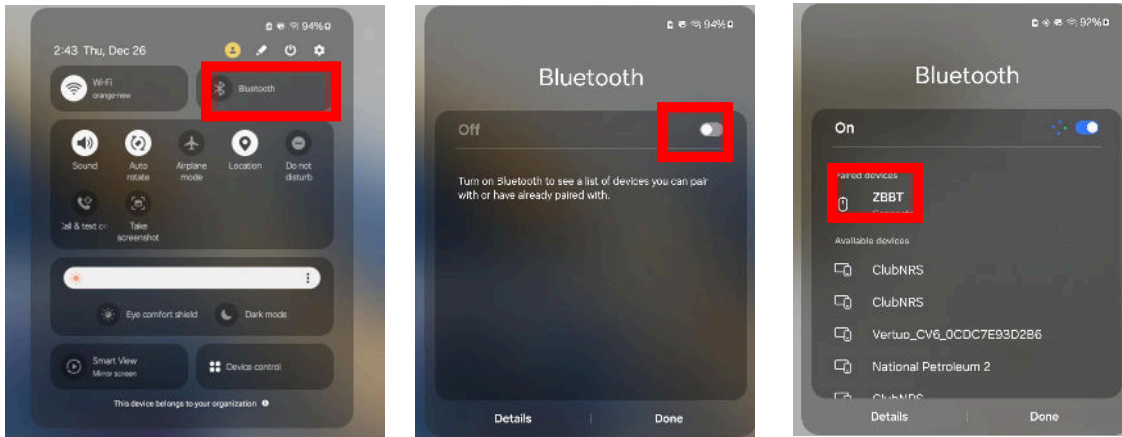
- Connect the other end of the USB connector to the host to begin charging. You can also connect the USB cable to an outlet using the power adapter to charge the battery.
- The battery begins charging when the scanner LED indicator starts flashing green. The LED turns steady green when charging is complete. Approx. charging time: 7 hours.

How to Connect the Scanner to Your Panther Tablet

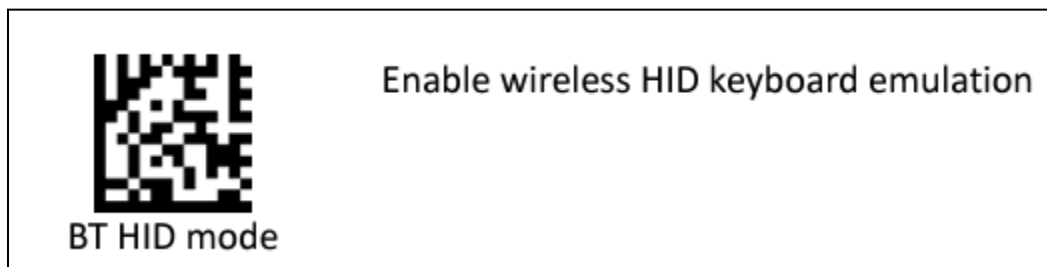
BT HID mode

In BT HID mode, the scanner connects to the host /PC via wireless connection and performs like there's a keyboard connection. The scanner initiates the connection to the remote device.

Enable wireless connection on your Panther. Make sure that Bluetooth is turned on.



Power on the scanner and program it with “BT HID Mode”.



The scanner should be on the list of discoverable devices. The default name of the scanner is “ZBBT”. Select the scanner from the list.

Finally, select “Pair”. The security code is 12345678

There are two ways to scan with this device. Handheld Scanning and Presentation Scanning




Handheld Scanning

1. Power on the scanner.
2. Press the trigger and aim at the barcode below.
3. When the scan is successful, the scanner will beep and the LED indicates blue.

Presentation Scanning

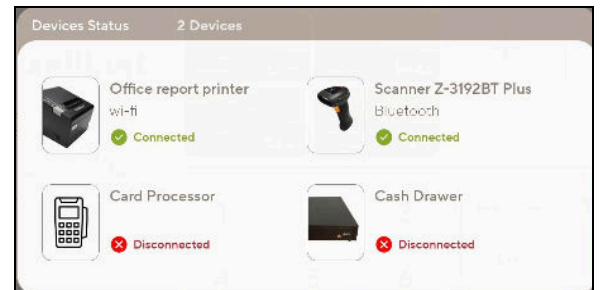
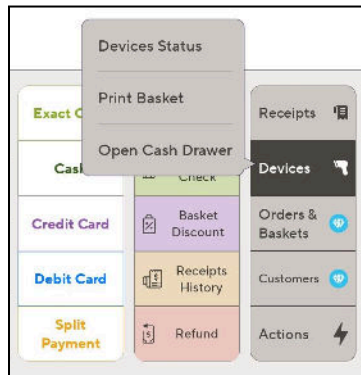
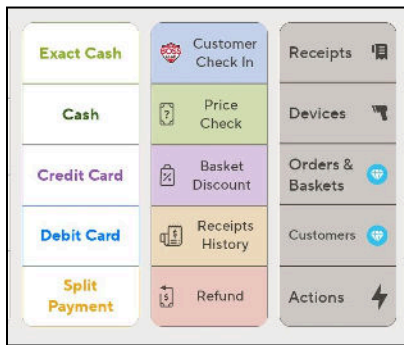
1. Put the scanner into the cradle for presentation scanning.
2. Move the barcode label and approach the scanner scanning zone.
3. When the scan is successful, the scanner will beep and the LED indicates blue.

Scan Modes

	<p>Trigger mode</p> <p>The scanner becomes inactive as soon as the data is transmitted. It must be triggered to become active again.</p>
	<p>Auto scan mode</p> <p>The scanner is still active after the data is transmitted but the successive transmission of the same barcode is not allowed when the trigger switch is pressed again.</p>
	<p>Presentation mode</p> <p>Also called auto trigger mode. The scanner is inactive but will automatically detect barcodes presented in the scan zone and become active.</p>

In order to view the scanner in the list of devices you will need to close the Panther app and restart the tablet.

Once the tablet restarts and the Panther app is re-opened, the scanner will show in the list of devices on the register screen



and in the settings sidebar under devices status

