

Installation & Set Up Guide

PUMA POS "LP" Model

Cashier Screen



Customer Screen



Side View



**Cashier
Screen**

**Customer
Screen**



**Removable
Back Panel
behind
Customer
Screen**

To Begin Set Up

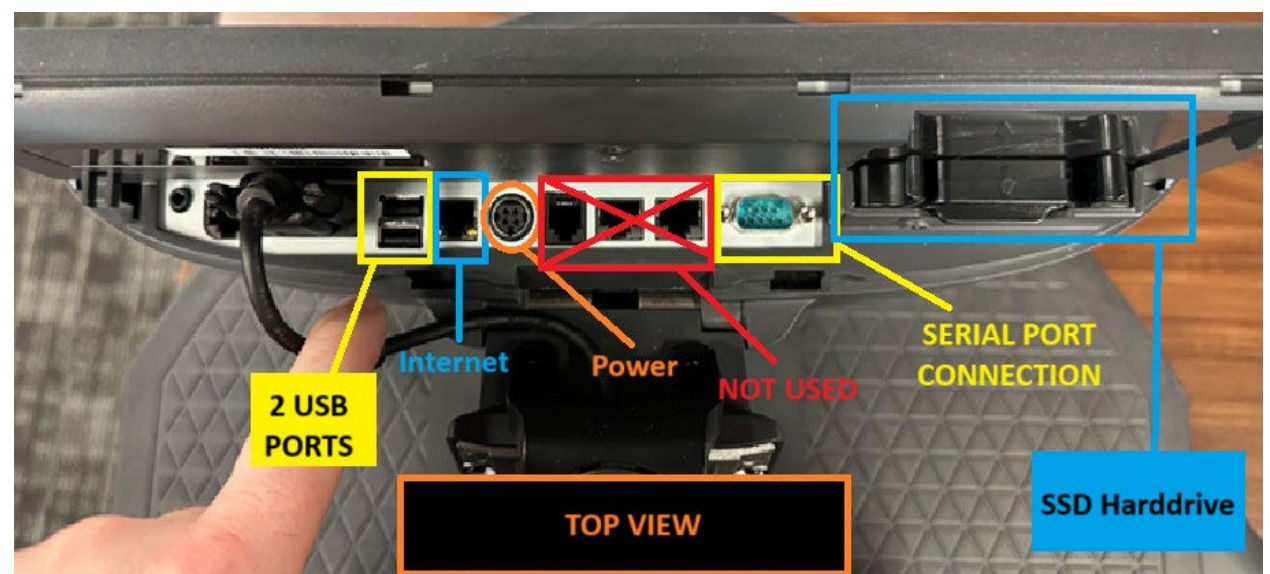
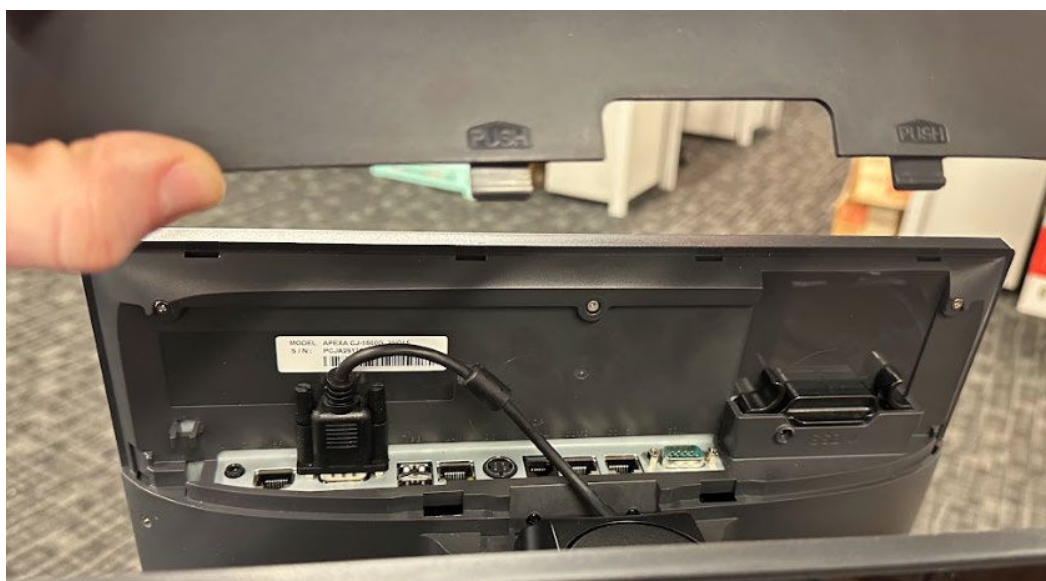
1. Lift Cashier Screen and gently pop off the back panel. This is where the cables are hidden



2. Remove the cover on the back of Cashier Screen. Press in gently and slide up and off.



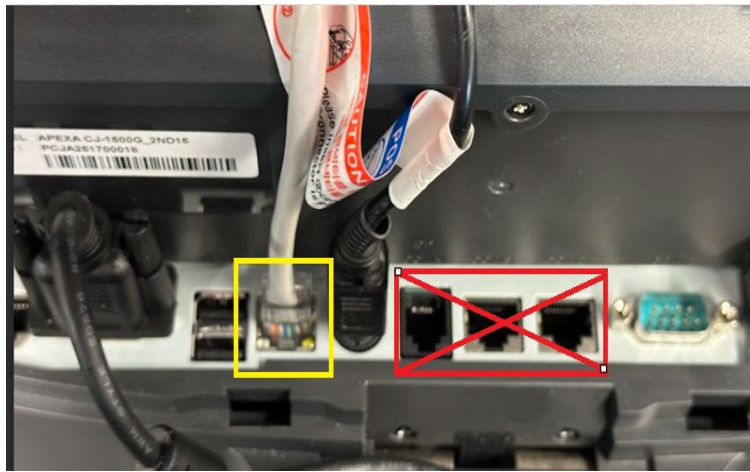
Connecting Peripherals *Please note that the *LJ Model* unit has a tunnel on the Customer Screen Hinge that ensures for neat / clean cable management. All cables need to be passed through the tunnel before connecting to back of the POS.



3. Plug in Power Adaptor - flat side facing out



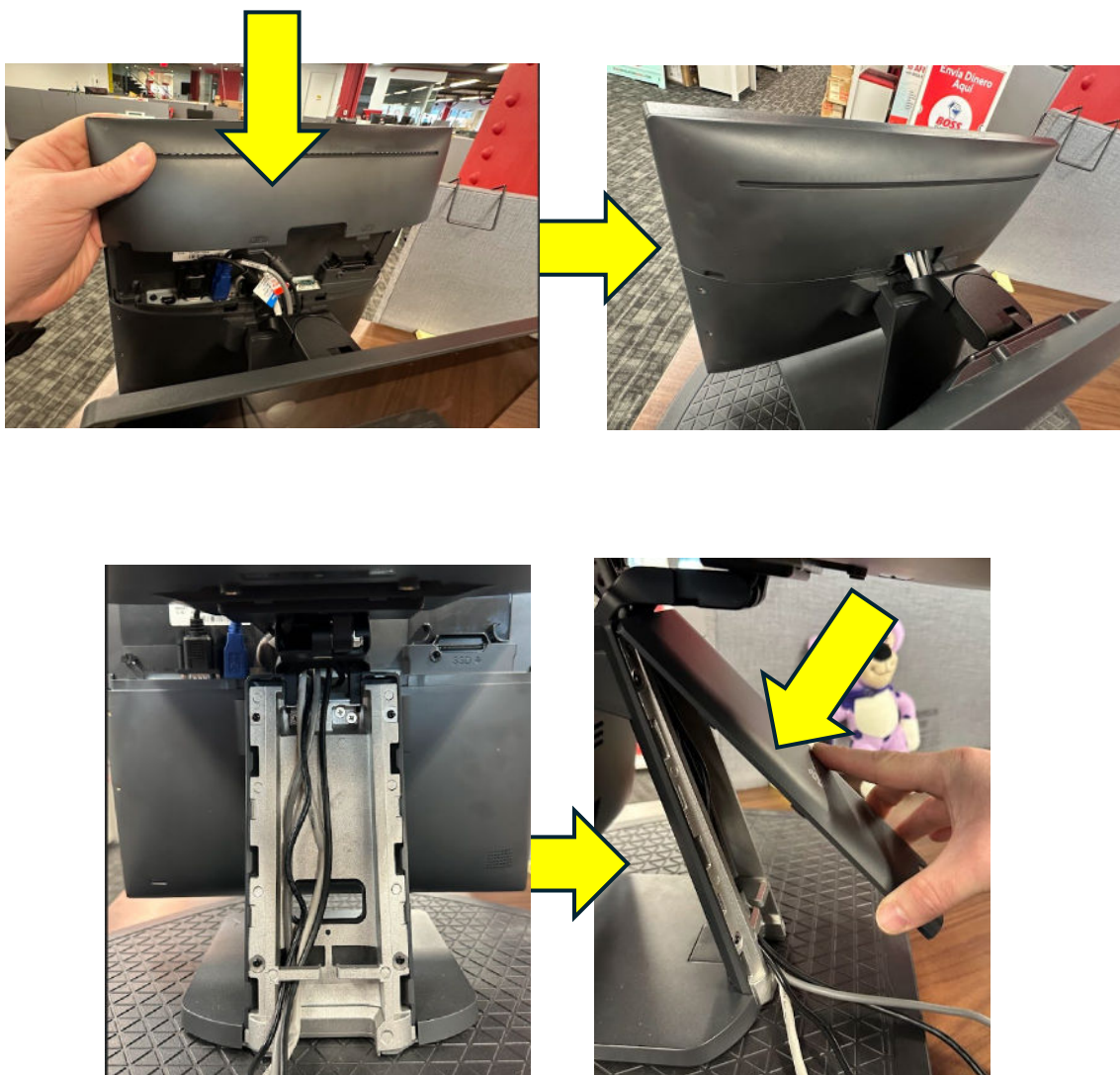
4. Connect Internet cable



5. Connect Cash Drawer and Printer USB Cables



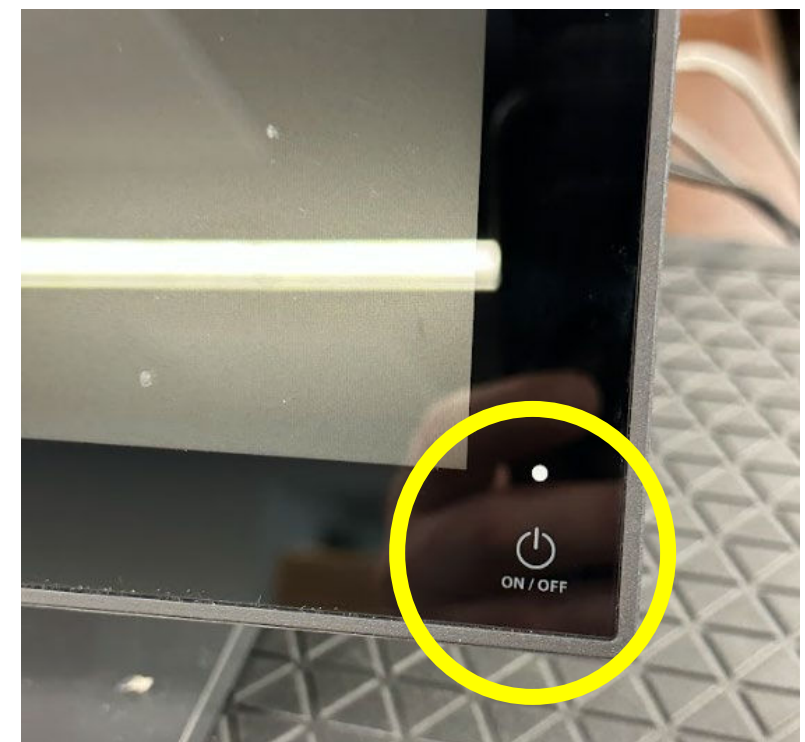
6. Slide Back Cover on and gently push in until it locks into place.



7. Plug Scanner USB behind Cashier Screen



8. Power On - Note that the Power Button is on the bottom right corner of Cashier Screen - embedded under the glass. Press and hold until POS powers on.



Recommended Scales

**TO PURCHASE, CONTACT YOUR NRS SALES AGENT, OR CALL 833-289-2769
FOR SERVICE, CONTACT SUPPORT@EATNNET.COM**

Tor Rey Over-Counter LPC-40L



Tor Rey Over-Counter LEQ 10/20



Required Connections

RS232 Null Modem Cable DB9 Male to Female Serial Extension Cord



RJ-45 to DB Serial Port Connector

